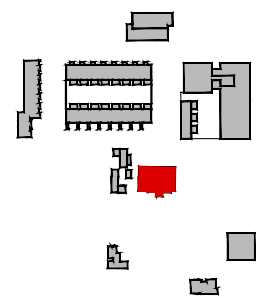


*New windows and external / internal doors to entire Lower Ground Floor / Basement Plan.

Cedar Mount House, Proposed Basement Plan

Legend	Floor Areas (Proposed)	Material Key
Existing	Basement Floor Area = 400m ²	AD Aluminium clad door
Proposed	Ground Floor Area = 223m ²	AW Aluminium clad window
Demolitions - Non Original Fabric	First Floor Area = 192m ²	BA Brick screen to AW
Demolitions - Original Fabric	Total Floor Area = 815m ²	BR Brick finish
Removal and Relocation of Original Fabric	*All dimensions in millimeters. All levels (in meters) are related to Malin Head levelling datum.	CB Concrete block finish
		GB Glazed balustrade
		MF Metal finish
		MR Metal roof finish
		RF Render finish
		SC Stone coping / sill
		SR Slate roof finish
		ST Stone finish
		TD Timber door
		TF Timber finish
		TR Terracotta ridge
		TW Timber window
		WP Waterproofing



Revision Description	Date	Rev. No.	Issued by
LRD Stage 2 Submission	07-06-2024	C02	SK
LRD Stage 3 Submission	23-10-2024	C03	SK

Any reference to fire safety design or performance is presented for coordination purposes only. Refer only to the granted Fire Safety Certificate, and fire consultant's information for fire safety design, specification and performance.
Figured dimensions only to be used. This drawing is copyright of O'Mahony Pike Architects Ltd. All information is shared as per approved use in accordance with ISO19650-2:2018, Table 5; Standard Codes for Suitability of Models and Documents and the BEP. If the 'Status' field is empty, this information has been shared at 50 - WIP.

mahony pike
 architecture | urban design
 email: info@mahonypike.com
 tel: +353 1 202 7400
 fax: +353 1 283 0822
 www.mahonypike.com

Dublin
 The Chapel
 Mount St. Anne's
 Milltown, Dublin 6
 Co. Cork

Cork
 One South Mall
 Cork City
 Co. Cork
 D06 XN52 Ireland
 T12 CCN3 Ireland

Project Code: ---
Project Lead: SD
Drawn By: MW
Job No.: 1307G
Purpose: LRD Stage 3 Submission

Scale @ A3: 1:100
Date Printed: 23-10-2024
Current Rev.: C03
Status: A3

Project: Knockabo Phase 2
Location: Mt. Anville Road, Dublin 14
Client: KIDAC

Drawing Title: Cedar Mount House, Proposed Basement Plan
Drawing No.: 1307G-OMP-CM-B1-DR-A-1000